



VT9500 BT



User Manual

1. Welcome.....	3
2. Product Overview.....	4
2.1 Box Contents	4
2.2 Headset Overview.....	5
2.3 Charge Base.....	6
3. Bluetooth Device Connecting Instruction.....	7
3.1 VT9500 Pairing with Bluetooth Device	7
3.2 VT9500 Using	9
3.3 VT9500 Charging	10
4. VT9500 Bluetooth Headset Features	11
4.1 Headset Multifunction Button.....	11
4.2 Headset Speaker Volume Button	10
4.3 Headphone Mute Button.....	12
4.4 Headset LED Indicator	12
5. Technical Specifications	13
5.1 VT 9500 Bluetooth Headset	13
5.2 Headset Battery.....	15
5.3 VT 9500 Bluetooth Headset Charging Base.....	15
5.4 Product Disposal Treatment	15

1. Welcome

Thank you for using the new VT9500 Bluetooth headset. We are confident that you will fully enjoy a range of powerful features this headset, and also pleasantly surprised to find the headset comfortable to wear and easy to use.

VT9500 Bluetooth headset features

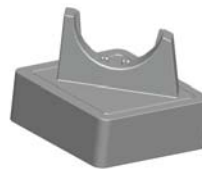
- Bluetooth version 3.0 and backward compatible.
- microphone with noise cancellation.
- wideband audio.
- volume and mute control.
- Intuitive headset multifunction button, you can handle the call easily.
- LED indicator.
- 500 hours standby time
- 21 hours talk time
- 10m communication distance

2. Product Overview

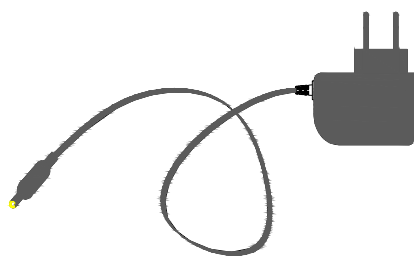
2.1 Box Contents



Headset



Charging base



Power Adapter



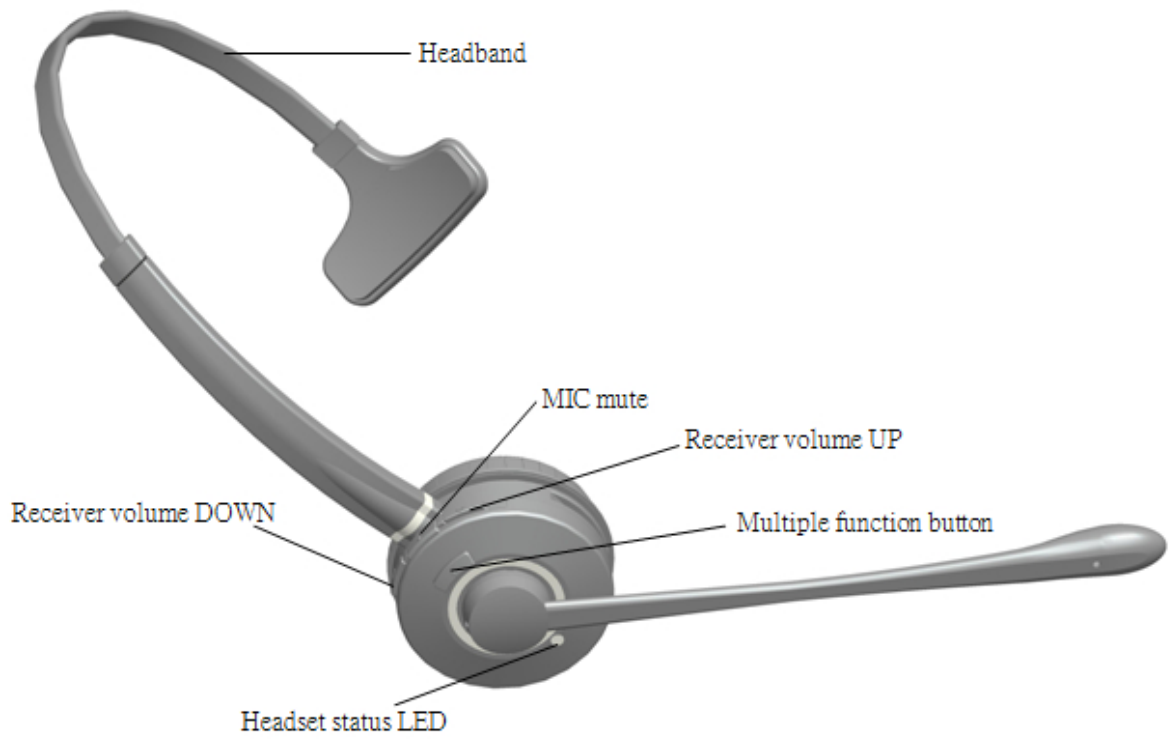
VT9500

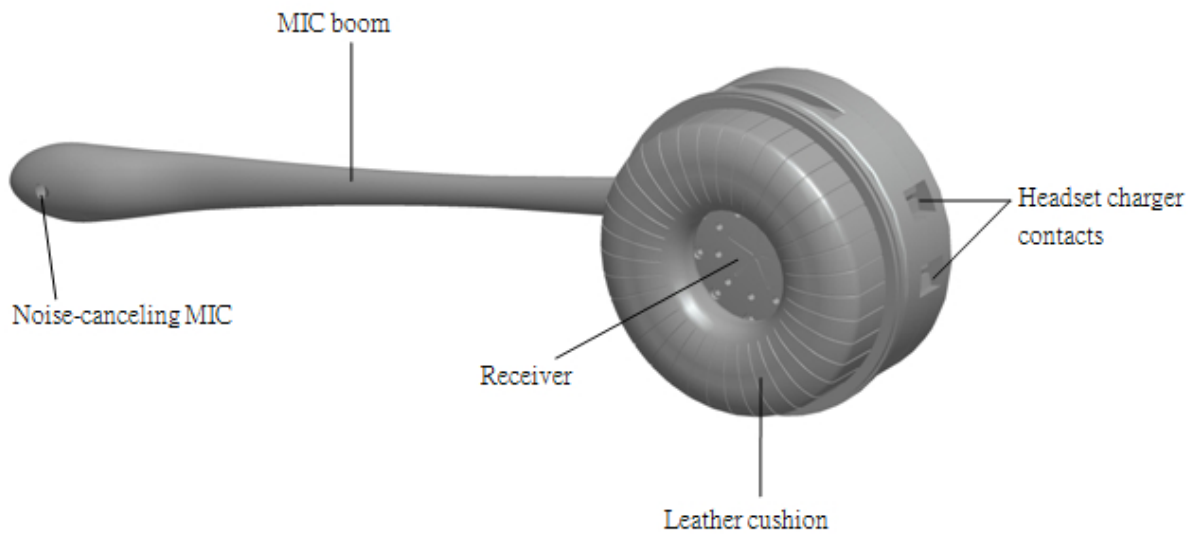


用户手册

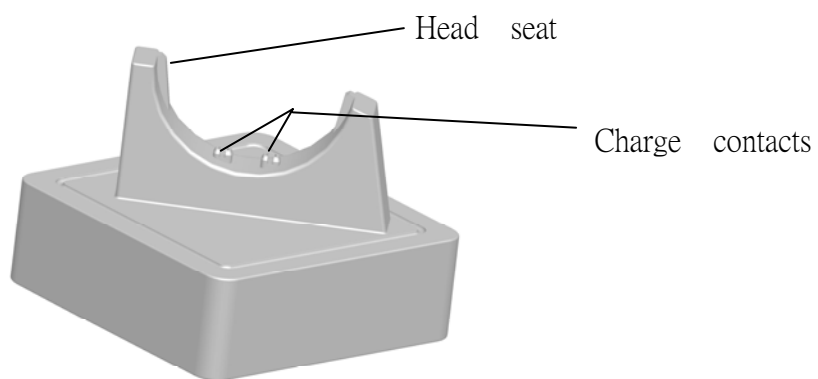
User's manual

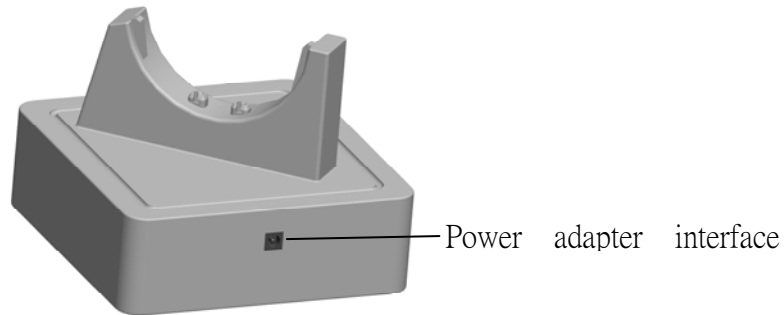
2.2 Headset Overview





2.3 Charging Cradle





3. Bluetooth Device Connecting Instruction

3.1 VT9500 Pairing with Bluetooth Device

1. Verify that the device (mobile phone, IP phones, laptops) with Bluetooth
2. Start the Bluetooth function on your Bluetooth device (refer to your device manual).
3. Turn on your headset.
4. Let your headset with your Bluetooth device pairing, press the multifunction key when pairing than 6s, LED flash alternately red and

blue description appears headset is in pairing mode, the pairing is successful then the blue light flashes. Follows:

Headset is use a procedure called "pairing" to connect to a Bluetooth device. By following simple steps, a phone can be paired with a headset in a few minutes completel.

To VT9500 paired with your phone, just need to follow the following three simple steps:

1) Make sure the headset is in pairing mode (long press the multifunction key 6S red over blue lights flashing alternately). When you first turn on the VT9500, the headset will start up in pairing mode automatically - that is, your Bluetooth devices can find it.

2) Setup your Bluetooth phone to 'find the "VT9500, according to your phone's usage guidelines operation. First make sure that Bluetooth is activated on your Bluetooth device. Then set your Bluetooth device to let it find the headset. This operation usually involves Go "setup (settings)" on your Bluetooth device, "connect" or "Bluetooth" menu and select "discover (search)" or "add " Bluetooth device option.

3) You will find the VT9500 Bluetooth headset in the Bluetooth device "Bluetooth" following items. Then your Bluetooth device will ask if you want to pair with it. Please click "yes " on your phone or "OK (confirm)"

button to accept the pairing, and use the pairing code or pIN = 0000 (4 zeros) to confirm the pairing. Your phone will confirm when pairing is complete. Note: Different devices may be paired according click on the icon VT9500 Bluetooth headset, the situation has paired successfully connected displays. No longer need to be paired again next connection, just click the icon to connect to VT9500.

If pairing failure, please let VT9500 enter pairing mode manually.

First, make sure the headset is turned off.

Then press and hold the multifunction key for more than about 6 seconds, until the blue light-emitting diode emits a constant red light flashing alternately. When the headset is in pairing mode, repeat step 2 and step 3.

5. Your Bluetooth device can see the VT9500 Bluetooth logo has connected with Bluetooth headset successfully, you can answer, end phones, audio players etc..

6. If no Bluetooth devices paired with the VT9500 within 120S under pairing mode, the VT9500 will shut down to reduce power consumption automatically.

3.2 VT9500 Using

1.Call Answer:

After cell phone or Bluetooth-enabled phone successful connect with

VT9500, when call coming, the headset will ring,press the multifunctional key for telephone call answering.

2.Call End

when talking want to end the call, short press the multifunctional key to end.

3.Microphone mute and mute canceled:

when call answering,short press the MUTE button will make microphone on mute status,

If short press the MUTE button mute will canceled.

4.Volume Adjustment

short click volume + key, the volume increase; short click volume - key, the volume decreases.

3.3 VT9500 Charging

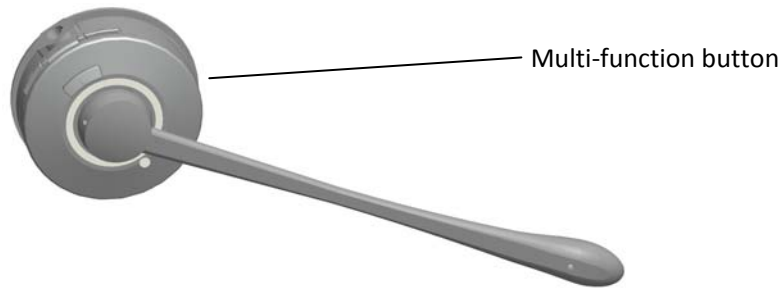
When headset VT9500 charging,red light long bright, when charging is completed, the red light off blue light long bright; leaving the dock the headset into standby mode, if a long time without mating connector is shut down automatically to reduce power consumption.

4.VT9500 Bluetooth Hadset Fatures

4.1 Headset multifunction button

Short or long press the Multi-functional button to answer and end a call .

Multi-function button to

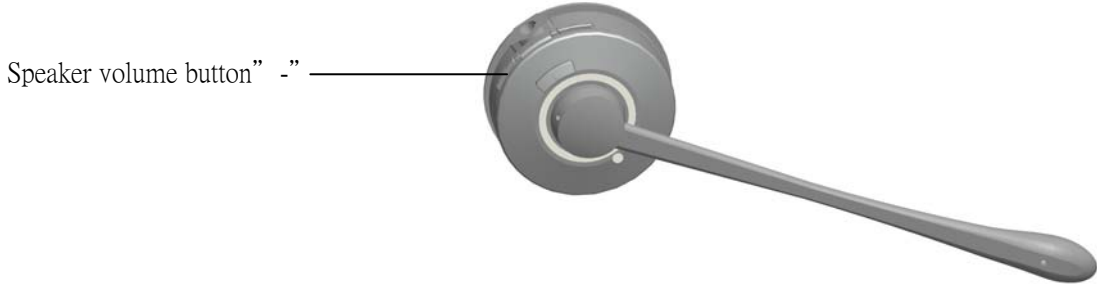


Function	Short press	Long press
Answer the call	√	
End the call	√	
<hr/>		
Power on		3s
Paring		6s 以上
Power shutdown		3s

4.2 Headset Speaker Volume Button

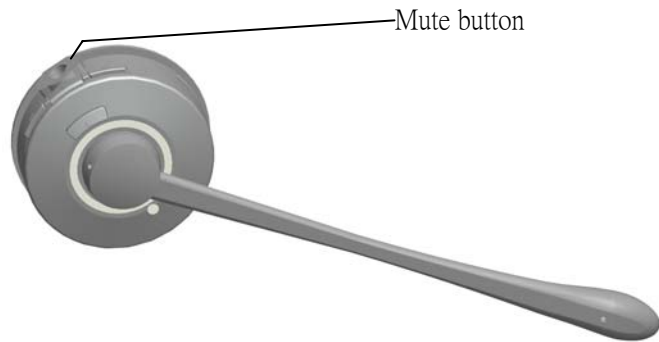
The speaker volume buttons adjust the headset speaker volume.





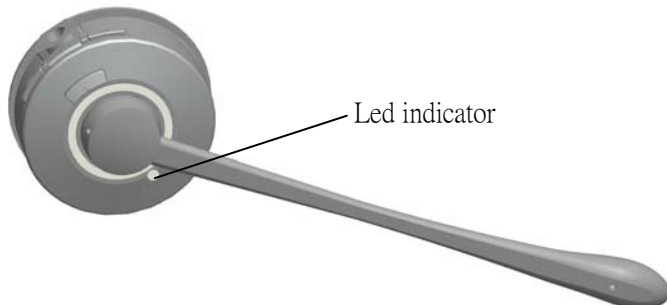
4.3 Headphone Mte Button

Mute button to make the microphone mute or mute canceled.



4.4 Headset LED Indicator

LED indicates call status



Headset status

LED status

Power on	Blue light flashes four times (bright 300ms, off 300ms)
Power off	Long red flash once (red light 2s)
Pairing mode	Blue lights flash alternately red light (red light 750ms, blue lights 750ms)
Pairing successful	Flashing blue light (bright 300ms, off 8s)
Answer the phone and music	Flashing blue light (bright 300ms, off 8s)
Charging	red light long bright
Charging full	Red light off, blue light long bright

5. Technical Specifications

5.1 VT 9500 Bluetooth headset

Working environment:

0 ° C to +40 ° C; up to 95% relative humidity non-condensing.

Call Control:

Multifunctional button support to answer a call, end the call; listen to audio and video playback.

Volume control and microphone mute:

Button controls on the headset.

Visual indicators:

LED indicates call status, pairing status and others.

Beep:

Indication tone may indicate volume level, microphone mute, and others.

Sound:

Mic Noise cancelling, sixth generation CVC echo cancellation, noise reduction , tone control.

Charging :

When VT9500 docking the base.

Wireless Standard:

Bluetooth 3.0 backward compatible.

Wearing styles:

Headband.

Microphone arm extension by:

Long extension arm.

Speaker:

Broadband speaker.

Microphone:

With noise-canceling microphone functionality.

5.2 Headset battery

Battery Type: Lithium-ion polymer.

Battery capacity: 300 mA per hour standard.

Battery Talk Time: Up to 21 hours.

Battery life: Minimum charge cycle can be repeated 1000 times.

Battery standby time: At least 500 hours.

Operating temperature range: -20 ° C to +60 ° C.

Battery charging time: Less than 60 minutes to charge 20%.

Less than 90 minutes to charge 50%.

Fully charged in less than 3.5 hours.

Battery storage life: Before needs to be charged, the headset can be stored in a closed state power six months.

5.3 VT 9500 Bluetooth Headset Charging Base

VT 9500 charging base meets the following specifications.

Size: 81 mm x 81 mm x 67 mm.

Using Range: Suitable for VT 9500 series headset.

5.4 Product Disposal Treatment

Dispose of in accordance with local regulations as headphones and recycling regulations. Never headset treated as household waste. Do not dispose of the headset in a fire, this battery may explode. If damaged, the battery may explode.